



Inhibitory Potentials of *Trichoderma harzianum* and Two Botanicals against Fungi Associated with Postharvest Rots of *Ipomoea batatas* (L.) Lam

A. A. Sobowale^{1*}, P. O. Owootomo¹ and C. R. Agbawodike¹

¹Department of Botany, University of Ibadan, Ibadan, Nigeria.

Authors' contributions

This work was carried out in collaboration among all authors. Author AAS designed the study, interpreted the output of the statistical analysis and did the overall editing of the manuscript. Author POO conducted the bench work and managed the literature searches. Author CRA wrote the first draft of the manuscript.

Article Information

DOI: 10.9734/IJPSS/2019/v28i230105

Editor(s):

(1) Dr. Abhishek Naik, Technology Development Department - Vegetable Crops, United Phosphorus Limited -Advanta, Kolkata, India.

(2) Dr. Peter A. Roussos, Agricultural University of Athens, Lab. Pomology, Greece.

Reviewers:

(1) Olubunmi Ayodele, Federal University of Technology, Nigeria.

(2) Liamngee Kator, Benue State University, Nigeria.

Complete Peer review History: <http://www.sdiarticle3.com/review-history/48986>

Original Research Article

Received 04 March 2019

Accepted 15 May 2019

Published 27 May 2019

ABSTRACT

The mycoparasitic potentials of *Trichoderma harzianum*, and growth inhibitory effects of *Vernonia amygdalina* (bitterleaf) and *Zingiber officinale* (ginger) on rot fungi in *Ipomoea batata* were examined. Rotting tubers were collected from Agbowo, Ojoo and Bodija markets in Ibadan. They were taken to the laboratory under sterile conditions. Different concentrations of the plants' extracts and spore suspensions of *T. harzianum* were prepared. The fungi isolated from the rotting tubers were later cultured on plates impregnated with different concentrations of the extracts and *T. harzianum*. Incubation was done at 28°C for 14 days. Data collection was done at 24 hours interval. The fungi isolated were *Aspergillus niger* and *Rhizopus stolonifer*. *T. harzianum* at 1×10^{-3} had a significantly ($p \leq 0.05$) better pathogens' inhibition than 1×10^{-5} . Inoculation of *T. harzianum* before the pathogens gave total inhibition. Inhibition of *A. niger* was significantly ($p \leq 0.05$) higher than *R. stolonifer*. Plant extracts from ethanol gave significantly ($p \leq 0.05$) better pathogens' inhibitions than that from distilled water. Extracts from both plants gave significantly ($p \leq 0.05$) better growth

*Corresponding author: E-mail: delesobowale@yahoo.com;

inhibition than control. Growth inhibition was significantly ($p \leq 0.05$) higher at absolute concentration of both extracts than other concentrations. Extract from ginger gave significantly ($p \leq 0.05$) better inhibition than that from bitter leaf. F-values for model ($P > 0.0001$) and concentrations ($P > 0.0024$) for the *T. harzianum* were highly significant. F-values for model ($P > 0.0001$), concentration ($P > 0.0001$) and treatment ($P > 0.0001$) for the plants extracts were also highly significant. The results further underscore the mycoparasitic potentials of *T. harzianum* as well as growth inhibitory effects of *Z. officinale* and *V. amygdalina* on fungi rot pathogens of *Ipomoea batata*.

Keywords: *Trichoderma harzianum*; *Vernonia amygdalina*; *Zingiber officinale*; mycoparasitic, pathogens; inhibition.

1. INTRODUCTION

Sweet potato is the most important food crop produced globally after wheat, rice, maize, potato, barley and cassava [1] and plays an important role in household food security in many countries [2,3,4]. It ranks seventh among the world's major crops [5,6].

However, sweet potato is prone to attack by microorganisms especially fungi such as *Aspergillus*, *Fusarium*, *Rhizopus*, *Penicillium* species amongst many others [7,8,9]. Infection occurs at different stages including; field, harvest and storage stages. Infection is mainly facilitated by mechanical injuries of the root and environmental conditions, but the physiological condition of the root may influence infection [10]. In addition, environmental and cultural stresses during growth also directly or indirectly predispose the roots to post harvest microbial infection [3,11]. Contaminations of sweet potato by mycotoxins produced by different pathogens, which poses serious health threat to consumers has also been reported [9].

Fungicides such as Dichloronitroaniline are used to protect tubers against *Rhizopus* soft rot [12]. However, the use of synthetic fungicides apart from their potential danger to both the farmer and environment are unaffordable by most farmers [13].

Biological control of phytopathogens by fungal antagonists such as *Trichoderma* species had been severally reported [14,15]. The use of plant extracts for antimicrobial activity has also been reported and it continues to gain more attention [16,17,18,19,20,21,22,23,24,25,26,27,28,29,30].

2. MATERIALS AND METHODS

2.1 Collection of Samples

Diseased Sweet potato tubers were obtained from some in Ibadan. These diseased samples

were kept in polythene bags and were appropriately labeled.

2.2 Media Preparation

The culture media Potato Dextrose Agar (PDA) used was prepared by mixing 19.5 g potato dextrose agar powder and 500 ml of distilled water in a 500 ml conical flask. The conical flask was corked with cotton wool wrapped in aluminum foil. The mixture was gently shaken and autoclaved at 121°C for 15 minutes after which it was allowed to cool. To prevent bacterial contamination, the resultant mixture (PDA) was acidified using lactic acid (fifty drops) after which they were poured into Petri-dishes and allowed to gel.

2.3 Isolation of Fungal Species from Rotting Sweet Potato Tubers

Diseased sweet potato tubers were cut into pieces using a blade and sterilized with 70% ethanol. The pieces plated onto PDA plates by means of a sterilized inoculating needle and were placed in the Petri dishes containing the solidified medium. The Petri dishes were then marked and labeled after which they were incubated at room temperature. Each isolated fungus was subcultured to get pure cultures following standard procedures.

2.4 Characterization and Identification of Isolated Fungi

This was done based on the description of the gross morphological appearance of fungal colonies on the potato dextrose agar culture medium and the slide culture technique for microscopic evaluation according to method by [31].

2.5 Pathogenicity Test

Fresh, healthy and matured sweet potato tubers were obtained from the market and were surface

sterilized with 70% ethanol. Each potato was wounded by removing a cylindrical cone from a portion of the tuber with the aid of a sterilized cork borer. Sterile inoculating needle was used to pick from the pure cultures of the pathogen and placed gently in the wounded part. The cylindrical cones were replaced back. The wounded parts were sealed with Vaseline. The sweet potatoes were then incubated at room temperature. These tubers were then examined daily to access and record the extent of fungal spoilage on each potato after which the pathogen is re-isolated from the inoculated sweet potato tubers. This test which conforms to Koch's postulate confirms the pathogenicity of the isolated fungi.

2.6 Collection of Biocontrol Fungus (*Trichoderma harzianum*)

A mixed culture of fungi containing *Trichoderma* sp. was obtained from the department of botany in the University of Ibadan, Nigeria. The *Trichoderma* sp. was re-isolated onto a freshly prepared potato dextrose agar medium until pure culture of *Trichoderma* sp. was obtained.

2.7 Plant Extracts Preparation

Two plant species were used in this study to develop extract formulation, namely *Vernonia amygdalina* and *Zingiber officinale*. These plants have been proven to possess inhibitory activity against fungi [32,33]. The leaves of *Vernonia amygdalina* and Rhizome of *Zingiber officinale* were collected, washed under a running tap water, air dried for weeks at room temperature and grounded into powdered form. The powdered samples were added to a different conical flask containing the extraction solvent (sterile distilled water and Ethanol). These mixtures were allowed to stand for 48 hours with periodic shaking in order to homogenize. Filtration was done through a double layered muslin cloth and No.1 Whatman filter paper prior to evaporation [34].

2.8 Evaluation of the Effects of the Plant Extracts and *Trichoderma harzianum* on the Growth of Fungal Isolates

Four different concentrations (25%, 50%, 75% and 100%) of the extracts were prepared following the method of [35]. These extracts were tested *in vitro* at these various concentrations (25%, 50%, 75% and 100%) on the rot causing fungi associated with sweet potato spoilage by

growing each fungus on a solidified PDA medium impregnated with 1 ml of each plant extract concentration. Controls were set up in which the test fungi were inoculated on PDA with no plant extract. Three replicates were set up for each treatment. Aqueous suspension of the fungus (*Trichoderma harzianum*) at different concentrations 10^{-5} (1.35×10^6) spores/ml and 10^{-3} (7.2×10^9) spores/ml was prepared in a test tube and 1ml of the *Trichoderma* suspension was introduced into the growth medium (PDA) in a Petri dish before and after inoculation with the rot pathogens. Controls were set up in which the test fungi were inoculated on the PDA with no *Trichoderma harzianum*. Three replicates were set up for each treatment and incubation was done for 10 days at room temperature.

2.9 Data Collection

The diametric growth of the inoculated fungi were measured daily both in the treated Petri Plates and the control. Fungi toxicity was recorded in terms of mean mycelia inhibition of the rot pathogens when compared with growth in control Petri plates.

2.10 Statistical Data Analysis

The experiment was laid out in a Completely Randomized Design (CRD). The data collected was subjected to analysis of variance (ANOVA) using the Generalized Linear Model (GLM) procedure of SAS (version 9.1). The differences between means were separated using Duncan's Multiple Range Test (DMRT) at $p \leq 0.05$.

3. RESULTS

The isolated fungi associated with post harvest rot of sweet potato were *Aspergillus niger* and *Rhizopus stolonifer*. Table 1 shows the antifungal activity of *T. harzianum* on *A. niger* and *R. stolonifer* from sweet potato tubers. The F-values for model, concentrations, days, pathogens and treatments were all highly significant ($P \leq 0.05$, $R^2 = 0.99$). The F-values for the interactions between variables were also highly significant except for the interactions between concentrations and days; pathogens and concentrations.

The introduction of *T. harzianum* before the pathogens was observed to be the best treatment in the growth inhibition of *Aspergillus niger* and *Rhizopus stolonifer* compared to other

treatments as shown in Table 2 with total growth inhibition of both fungi ($P \leq 0.05$, $R^2 = 0.99$). *Aspergillus niger* was observed to be better inhibited by *T. harzianum* with mycelia growth of 15.87mm than *Rhizopus stolonifer* with mycelia growth of 21.15mm (Table 3). At concentration 1×10^{-3} both *A. niger* and *R. stolonifer* were better inhibited by *T. harzianum* having radial growth of 15.41mm and 20.52mm respectively when compared to concentration 1×10^{-5} with radial growth of both pathogens at 16.34mm and

21.77mm respectively (Table 4). Table 5 shows General performance of *A. niger* and *R. stolonifer* isolated from the rotting sweet potato among incubation days after treating with two concentrations of *T. harzianum*. The growth inhibition of the isolated fungi differed significantly with respect to incubation periods i.e. *Trichoderma harzianum* had significantly different inhibitory effect on the growth of the test fungi amongst days of incubation ($P \leq 0.05$, $R^2 = 0.99$).

Table 1. ANOVA table for antifungal activity of *T. harzianum* on *A. niger* and *R. stolonifer* from sweet potato tubers

Source	DF	SS	MS	F value	Pr > F
Model	157	3386.91	21.57	114.46	0.0001**
Concentration	1	1.75	1.75	9.30	0.0024**
Days	9	84.77	9.42	49.97	0.0001*
Pathogen	1	39.31	39.31	208.5	0.0001**
Treatment	4	2715.47	678.87	3601.82	0.0001**
Concentration^Days	9	1.42	0.16	0.84	0.5827
Pathogen^Concentration	1	0.06	0.06	0.32	0.5724
Treatment*Concentration	4	8.65	2.16	11.47	0.0001**
Pathogen*Days	8	15.64	1.95	10.37	0.0001**
Treatments*Days	36	345.80	9.61	50.96	0.0001**
Treatments*Pathogen	4	54.13	13.53	71.79	0.0001**
Pathogen*Concentration*Days	8	3.08	0.39	2.05	0.0401*
Treatment*Concentration*Days	36	12.32	0.34	1.82	0.0034**
Treatment*Pathogen*Concentration	4	47.04	11.76	62.40	0.0001**
Treatment*Pathogen*Days	32	32.28	1.01	5.35	0.0001**
Error	412	77.65	0.19		
Corrected Total	569	3464.56			

**=highly significant

Table 2. Mean growths (mm) of *A. niger* and *R. stolonifer* in the presence of *T. harzianum* at different treatments

Treatment	<i>Aspergillus niger</i>	<i>Rhizopus stolonifer</i>
Pathogens alone (control)	52.50 ^a	62.34 ^a
<i>Trichoderma sp</i> after pathogens	20.59 ^b	35.91 ^b
<i>Trichoderma sp</i> and pathogens	6.28 ^c	7.49 ^c
<i>Trichoderma sp</i> before pathogens	0.00 ^d	0.00 ^d
<i>Trichoderma sp</i> alone	0.00 ^d	0.00 ^d
R ²	0.99	0.99

Means with different letter are significantly different ($p \leq 0.05$)

Table 3. Comparisons of the pathogens' growth inhibitions by *T. harzianum*

Pathogen	Mean growth (mm)
<i>Rhizopus stolonifer</i>	21.15 ^a
<i>Aspergillus niger</i>	15.87 ^b
R ²	0.99

Means with different letters are significantly different ($p \leq 0.05$)

Table 4. Effectiveness of *T. harzianum* at different concentrations on mean growths (mm) of the pathogens

Concentration (spores/ml)	<i>Aspergillus niger</i>	<i>Rhizopus stolonifer</i>
1 x 10 ⁻⁵	16.34 ^a	21.77 ^a
1 x 10 ⁻³	15.41 ^b	20.52 ^b
R ²	0.99	0.99

Means with different letters are significantly different (p≤0.05)

Table 5. General performance of *A. niger* and *R. stolonifer* among incubation days after treating with two concentrations of *T. harzianum*

Days	<i>Aspergillus niger</i>	<i>Rhizopus stolonifer</i>
10	19.77 ^a	19.38 ^d
9	19.45 ^{ab}	20.33 ^d
8	19.20 ^{ab}	22.28 ^c
7	18.40 ^{bc}	23.82 ^b
6	17.77 ^{cd}	24.35 ^b
5	16.98 ^d	16.98 ^f
4	16.00 ^e	25.88 ^a
3	14.10 ^f	23.72 ^b
2	11.67 ^g	19.45 ^d
1	05.43 ^h	11.13 ^e
R ²	0.99	0.99

Means with different letter are significantly different (p≤0.05)

Table 6. ANOVA table for antifungal activity of *Zingiber officinale* and *Vernonia amygdalina* extract on *A. niger* and *R. stolonifer* from sweet potato tubers

Source	DF	SS	MS	F value	Pr > F
Model	344	12378.18	35.98	72.10	0.0001**
Concentration	3	67.05	22.35	44.78	0.0001**
Days	9	1191.66	132.41	265.31	0.0001**
Pathogen	1	668.58	668.58	1339.65	0.0001**
Treatment	5	8655.10	1731.02	3468.50	0.0001**
Concentration^Days	27	7.55	0.28	0.56	0.9665
Pathogen^Concentration	3	6.62	2.21	4.42	0.0042**
Treatment*Concentration	15	221.69	14.78	29.61	0.0001**
Pathogen*Days	9	113.31	12.59	25.03	0.0001**
Treatments*Days	45	562.05	12.49	25.23	0.0001**
Treatments*Pathogen	5	565.97	113.19	226.81	0.0001**
Pathogen*Concentration*Days	27	3.34	0.12	0.25	1.000
Treatment*Concentration*Days	135	44.54	0.33	0.66	0.9987
Treatment*Pathogen*Concentration	15	128.36	8.56	17.15	0.0001**
Treatment*Pathogen*Days	45	42.37	3.16	6.34	0.0001**
Error	1035	546.48	0.50		
Corrected Total	1489	12924.66			

**=highly significant

Table 6 shows the for antifungal activity of *Zingiber officinale* and *Vernonia amygdalina* extract on *A. niger* and *R. stolonifer* from rotting sweet potato tubers. The F-values for model, concentrations, days, pathogens and treatments were all highly significant (p≤0.05, R²= 0.99). The F-value for the interactions between variables were also highly significant except for the

interactions between concentrations and days; treatment, concentrations and days; pathogen, concentration and days. The growths of *A. niger* and *R. stolonifer* were better inhibited by ethanol extract of ginger with radial growth of 7.42mm and 8.01mm respectively when compared with other treatments including controls as shown in Table 7. The absolute ethanol extracts of

Zingiber officinale had the highest growth inhibitory effect on both *A. niger* (0.52mm) and *R. stolonifer* (0.00mm) compared to all other concentrations of the plant extract while 25% concentration had the least growth inhibitory effect on both fungi compared to 75% and 50% concentrations ($P \leq 0.05$, $R^2 = 0.99$) (Table 8). The absolute ethanol extracts of *Vernonia amygdalina* had the highest growth inhibitory effect on both *A. niger* (15.98mm) and *R. stolonifer* (11.92mm) compared to all other concentrations of the plant extract as shown in Table 9 ($P \leq 0.05$, $R^2 = 0.99$). Table 10 shows general performance of *A. niger* and *R. stolonifer* among incubation days after treating with various concentrations of extracts. The growth inhibition of the isolated fungi differ significantly with respect to incubation periods i.e. The plants

extracts had significantly different inhibitory effect on the growth of the isolated fungi among days of incubation ($P \leq 0.05$, $R^2 = 0.99$).

4. DISCUSSION

This study revealed that *Rhizopus stolonifer* and *Aspergillus niger* are among the common fungi associated with rotting of sweet potato tubers around Agbowo, Ojoo and Bodija, Ibadan, Nigeria. This finding agreed with the work of [36] that isolated and identified different fungi including *R. stolonifer* and *A. niger* from diseased sweet potato tubers. The highly significant F-value ($P > 0.0001$) for Model of growth inhibition of fungi isolated from a rotting sweet potato tubers by *Trichoderma harzianum* shows the correctness of the fitted model.

Table 7. Mean growths (mm) of the pathogens on plates impregnated with extracts of *Zingiber officinale* and *Vernonia amygdalina*

Treatment	<i>Aspergillus niger</i>	<i>Rhizopus stolonifer</i>
Pathogen alone (control)	77.37 ^a	55.49 ^a
Aqueous extract of bitter leaf and Pathogen	76.66 ^a	46.06 ^b
Aqueous extract of ginger and pathogen	71.03 ^b	46.34 ^b
Pathogen alone (control)	12.42 ^d	2.90 ^d
Ethanol extract of bitter leaf and Pathogen	24.54 ^c	18.88 ^c
Ethanol extract of ginger and pathogen	7.42 ^e	8.01 ^e
R ²	0.99	0.99

Means with different letter are significantly different ($p \leq 0.05$)

Table 8. Impact of different concentrations of *Zingiber officinale* extracts on the growth (mm) of *A. niger* and *R. stolonifer* from sweet potatoes

Concentrations (%)	<i>Aspergillus niger</i>	<i>Rhizopus stolonifer</i>
25	18.38 ^a	26.42 ^a
50	16.62 ^a	13.23 ^b
75	16.10 ^a	10.03 ^b
100	0.52 ^b	0.00 ^c
Control	77.37 ^c	55.49 ^d

Means with different letter are significantly different ($p \leq 0.05$)

Table 9. Impact of different concentrations of *Vernonia amygdalina* extracts on the growth (mm) of *A. niger* and *R. stolonifer* from sweet potatoes

Concentrations (%)	<i>Aspergillus niger</i>	<i>Rhizopus stolonifer</i>
25	22.78 ^a	31.65 ^b
50	20.07 ^b	41.28 ^a
75	16.72 ^c	13.33 ^c
100	15.98 ^c	11.92 ^c
Control	77.37 ^d	55.49 ^d

Means with different letter are significantly different ($p \leq 0.05$)

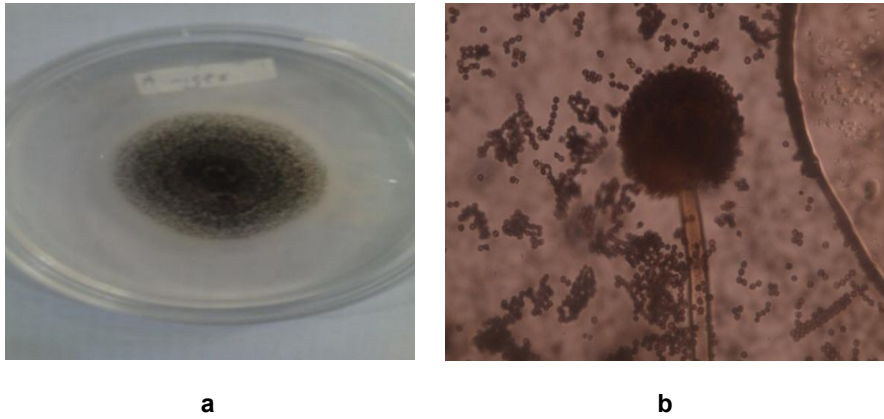


Plate 1. Pure culture (a) and photomicrograph (b) of *Aspergillus niger*

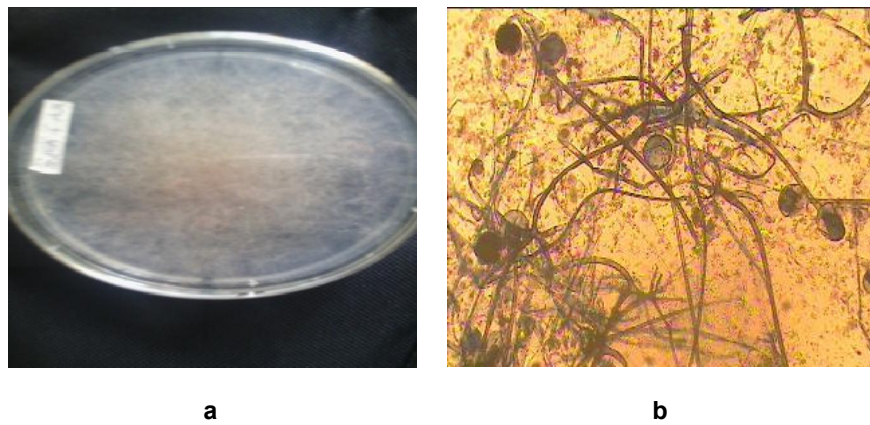


Plate 2. Pure culture (a) and photomicrograph (b) of and *Rhizopus stolonifer*

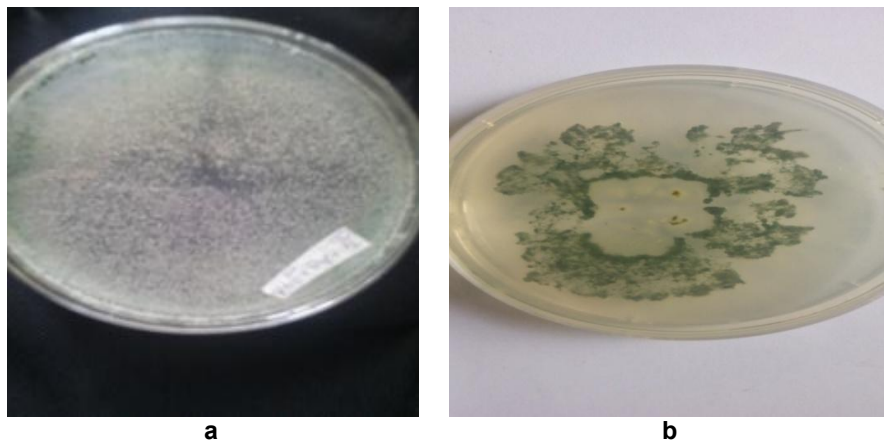


Plate 3. Young (a) and old cultures (b) of *Trichoderma harzianum*

The highly significant F-value ($P>0.0001$) for treatment shows that the various *T. harzianum* treatment had highly significant impact in growth inhibition of the pathogens. The effectiveness of

Trichoderma harzianum in growth inhibition of *R. stolonifer* and *A. niger* corroborates the work of [37] that reported the ability of *Trichoderma* sp. to directly attack different fungi. The highly

significant F-value ($P>0.0001$) for pathogen means that the isolated fungi were sensitive to the mycoparasitic effect of *T. harzianum*. The introduction of *T. harzianum* before the pathogen which shows a total inhibition of mycelia growth of pathogens corroborates the findings of [38,39] who reported *Trichoderma* sp. to impede spore germination, kill cells, occupy a physical space and avoid multiplication of pathogen.

The highly significant F-value ($P>0.0024$) for concentration means that the impact of the different *T. harzianum* concentration on the growth of *R. stolonifer* and *A. niger* were highly significant. The better effectiveness of *T. harzianum* at 1×10^{-3} cells/ml also suggested a relationship between the aggressive ability of *T. harzianum* and its sporulation capacity.

Table 10. General performance of *A. niger* and *R. stolonifer* among incubation days after treating with various concentrations of extracts.

Days	<i>Aspergillus niger</i>	<i>Rhizopus stolonifer</i>
10	50.77 ^a	45.01 ^a
9	49.85 ^{ab}	43.56 ^b
8	49.47 ^b	41.47 ^c
7	48.44 ^c	37.74 ^d
6	48.26 ^c	35.10 ^e
5	46.79 ^d	32.99 ^f
4	46.18 ^d	28.91 ^g
3	43.78 ^e	23.74 ^h
2	38.91 ^f	16.53 ⁱ
1	26.67 ^g	07.78 ^j
R ²	0.99	0.99

Means with different letter are significantly different ($p \leq 0.05$)

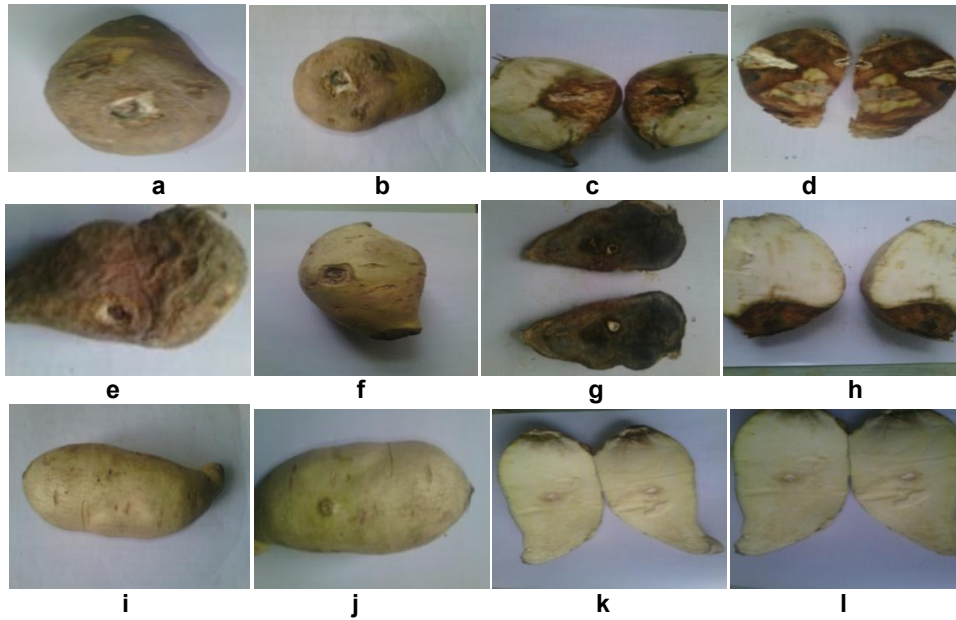


Plate 4. Pathogenicity of *A. niger* (a-d); *R. stolonifer* (e-h) and control (i-l)

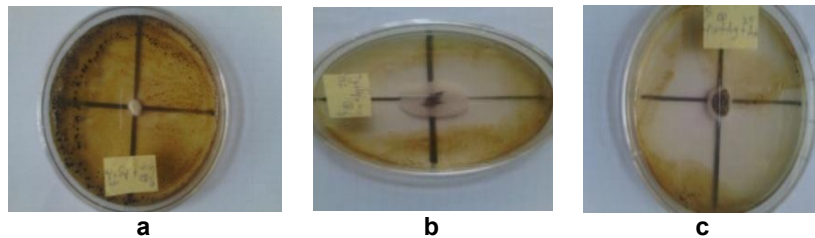


Plate 5. Growth inhibition of *A. niger* using *Zingiber officinale* at 75% (a) and 50% (b, c) concentrations

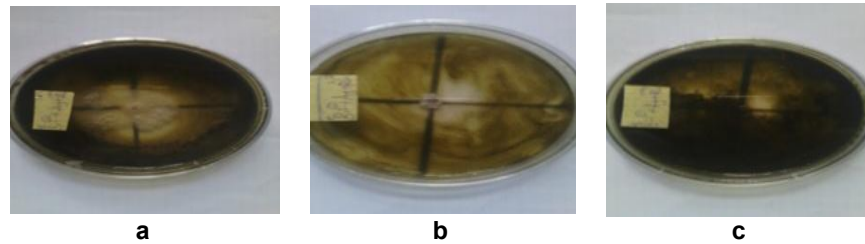


Plate 6. Growth inhibition of *R. stolonifer* using *Vernonia amygdalina* at 25% (b), 75% (a) and 100% (c) concentrations

The highly significant F-value ($P > 0.0001$) for days shows that the impact of *T. harzianum* in growth inhibitions of *A. niger* and *R. stolonifer* among incubation days is highly significant at $p \leq 0.05$. Effectiveness of *T. harzianum* in plant disease control points to the high potential and reproducibility of the biological control agent [40].

The non-significant F-value ($P > 0.5827$) for interactive effect of concentrations and days shows that growth inhibitions of *A. niger* and *R. stolonifer* by different concentrations of *T. harzianum* were not significant among the days of incubation. This means that the days of incubation does not interact with the *Trichoderma harzianum* concentrations to significantly impact the growth of *A. niger* and *R. stolonifer*.

The non-significant F-value ($P > 0.5724$) for the interactive effect of pathogen and concentration means that both variable did not interact to produce a significant impact on the growth of the *A. niger* and *R. stolonifer*.

The highly significant F-value ($P > 0.0001$) for the interactive effects of concentration and treatment reveals that any particular concentration of the treatment have significant impact on the growth of *A. niger* and *R. stolonifer*. The highly significant F-value ($P > 0.0001$) for the interactions between pathogen and days; treatment and days; treatments and pathogen mean that the two variables in each case interacted to produce a significant impact on the growth of *A. niger* and *R. stolonifer*. The highly significant F-value ($P > 0.0034$) for the interactive effect of treatment, concentration and days means that the effect of any particular treatment with any particular concentration among the days of incubation have significant impact on the growth of *A. niger* and *R. stolonifer*. The significant F-value ($P > 0.00401$) for the interactions of pathogen, concentration and days means the three variables interacted to produce significant impact on the growth of the isolated fungi. The highly significant F-value

($P > 0.0001$) for the interactive effects of treatment, pathogen and concentration; treatment, pathogens and days means that the three variables in each case interacted to have significant impact on the growth of *A. niger* and *R. stolonifer*.

The study also revealed that fungitoxic compounds were present in *Zingiber officinale* and *Vernonia amygdalina* since they were able to inhibit the growth of the test fungi. This is in accordance with the findings of [41] on the use of ginger extract among other plant extract in controlling yam tuber rot caused by *Aspergillus flavus*, *A. niger* and *Fusarium oxysporum*. The two plant extracts screened *in vitro* showed varying levels of toxicity to the fungi which is expressed as mean inhibition of mycelia growth. The inhibitory effect of the plant extracts on growth of the pathogens agrees with the work of [33] that reported the inhibition of a rot fungus using ginger extract.

The highly significant F- value ($P > 0.0001$) for Model with regards to growth inhibition of fungi isolated from rotting sweet potato tubers by the plant extracts shows the appropriateness of the fitted model.

The highly significant F-value ($P > 0.0001$) for treatment shows that the various treatments of *Zingiber officinale* and *Vernonia amygdalina* were effective in inhibiting growth of the pathogens. The extract of *Zingiber officinale* had significant inhibitory impact on the growth of the pathogens which may be due to presence of antifungal compounds in the plant as reported by [42]. The highly significant F-value ($P > 0.0001$) for pathogen means that the isolated fungi were sensitive to the inhibitory effect of *Zingiber officinale* and *Vernonia amygdalina*. There was a significant difference in statistical test at $p \leq 0.05$ among mycelia radial growth values observed on the different plant extracts used and on the various concentrations employed when

compared with the control. This is in agreement with the works of [33,43] that both employed different plant extracts in controlling different pathogens. The highly significant F-value ($P>0.0001$) for concentration means that the impact of the different concentration of *Zingiber officinale* and *Vernonia amygdalina* on the growth of the fungi were highly significant. There was a positive correlation between the growth inhibition of pathogens and the various concentrations of the two plant extracts employed. This is in agreement with the work of [44] that reported higher fungitoxicity of plant extracts at increased concentrations. The highly significant F-value ($P>0.0001$) for days shows that the growth inhibitory effects of *Zingiber officinale* and *Vernonia amygdalina* on *A. niger* and *R. stolonifer* among incubation days were highly significant.

The non-significant F-value ($P>0.9665$) for interactive effect for concentrations and days means that the impact of any plant extract concentration on the growth of *A. niger* and *R. stolonifer* were not significantly different among the days of incubation.

The highly significant F-values for interactions between pathogens and concentrations ($P>0.0042$); treatments and concentrations ($P>0.0001$); pathogens and days ($P>0.0001$); treatments and days ($P>0.0001$); treatments and pathogens ($P>0.0001$) means that both variables in each case interacted to produce highly significant impact on the growth of *A. niger* and *R. stolonifer*. The non-significant F-value ($P>0.9987$) for the interactive effect of treatment, concentration and days means shows that the effect of any particular plant treatment with any particular plant extract concentration among the days of incubation does not have significant impact on the growth of *A. niger* and *R. stolonifer*. The highly significant F-values for the interactions of pathogens, concentrations and days ($P>0.0001$); treatment, pathogen and concentrations ($P>0.0001$); treatment, pathogens and days ($P>0.0001$) means that all three variable in each case interacted to have significant impact on the growth of the isolated pathogens.

5. CONCLUSION

The results obtained in this work showcase the promising mycoparasitic potential of *Trichoderma harzianum* and growth inhibitory effect of extracts of *Zingiber officinale* and *Vernonia amygdalina*

against plant pathogens. The use of these biocontrol measures in fungal disease management could go a long way in reducing over dependence on chemicals by the farmers, cost of production and economic loss of crops thus should be suggested as a component of integrated disease management procedures for the control of rot pathogens of sweet potato in the field. Further research geared towards understanding how disease control as well as the mode of action by *Trichoderma* species and these plant extracts is achieved will however be needed for credible assertions.

COMPETING INTERESTS

Authors have declared that no competing interests exist.

REFERENCES

1. FAO. Production year book, FAO statistic section 125, Food and Agricultural Organization, United Nation, Rome; 2008.
2. Mutuura JN, Ewell PT, Abubaker A, Munga T, Ajanga S, Irungu J, Omari F, Moabe S. Sweet potato in the food systems of Kenya: Result of socio-economic survey. In: Kabira JN, Ewell PT (Eds). Current research for the improvement of potato and sweet potato in Kenya, proceeding of KARI/CIP technical workshop on collaborative research held from 20th February to 1st march 1991 in Nairobi Kenya, 1992;51-66.
3. Ray RC, Ravi V. Spoilage of sweet potato in tropics and control measures. Critical Reviews in Food Science and Technology. 2005;45:623-644.
4. Tomlins KI, Rees D, Ray RC, Westby A. Sweet potato utilization, storage and small scale processing in Africa. Overview in: Ray RC, Tomlins KI (eds). Sweet potato: Post harvest aspect in food, feed and industry, nova science publisher inc., Hauppauge, newyork, USA. 2010;271-294.
5. Nwokocho HN. Agronomy of sweet potatoes root crop research and technology transfer training course (Training manual) NRCRI. 1992;77-84.
6. Hu W, Shun-ichiro T and Yoshiaki H. Effect of heat on quality of sweet potato in wrapper-type cold storage during long-term storage. Journal of the Faculty of Agriculture. Kyushu University. 2004;49: 129-38.
7. Clark CA, Hoy MW. Identification of Resistances in sweet potato to Rhizopus

- soft rot using two inoculation methods. *Plant Disease*. 1994;78(11):1078- 1081.
8. Onuegbu BA. Fundamentals of crop protection. Agro-science consult and Extension Unit, RSUT. 2002;237.
 9. Agu KC, Nweke GU, Awah NS, Okeke BC, Mgbemena IC, Okigbo RN, Ngenegbo UC. Fungi associated with the postharvest loss of sweet potato. *International Journal of Research Studies in Biosciences (IJRSB)*. 2015;3(9):33-38.
 10. Wills R, McGlasson B, Graham D, Joyce D. *Postharvest: An introduction to the physiology and handling of fruits vegetables and ornamentals (4th edition)*, CAB international, Wallingford, UK. 1998; 262.
 11. Scot N. Rhizopus soft rot of sweet potato. Cooperative extension service. College of tropical agriculture and human resources. University of Hawaii at Manoa. 2009;6.
 12. Ray RC, Ravi V, Rao KR, Hedge V, Tomlins KI. Postharvest handling, storage methods, pest and diseases of sweet potato. In: Ray RC, Tomlins KI (Eds) *Sweet potato: Post harvest aspect in food, feed and industry*, nova science publisher Inc, Hauppauge, Newyork, USA. 2010;27-58.
 13. Obagwu J, Emechebe AM, Adeoti AA. Effects of extract of garlic *Allium sativum* bulb and neem *Azadirachta indica* juss seed on mycelia growth and sporulation of *Collectotrichum capsicis* butler and bixby. *Journal of Agricultural Science and Technology*. 1997;5(1):51-55.
 14. Monte E. Understanding trichoderma: Between biotechnology and microbial ecology. *International Microbiology*. 2001; 4:1-4.
 15. Kubicek CP, Bissett J, Druzfina L, Kulling G, Szakacs G. Genetic and metabolic diversity of trichoderma: A case study on southeast Asian isolates. *Fungal Genetics and Biology*. 2002;38:310-319.
 16. Oliver – Bever B. *Medicinal plants in tropical Africa*. Great Britain University Press, Cambridge. 1986;29–36.
 17. Iwu MM. *Handbook of African medicinal plants*. Boca Raton: CRC Press Inc. 1993; 224.
 18. Shivpuri A, Sharma OP, Thamaria S. Fungitoxic properties of plant extracts against pathogenic fungi. *Journal of Mycology and Plant Pathology*. 1997;27(1): 29-31.
 19. Cowan MM. Plant products as antimicrobial agents. *Clinical Microbiology Reviews*. 1999;12:564-582.
 20. Adodo A. *Nature power*. 3rd Edition. Generation Press Limited, Lagos, Nigeria. 2004;290.
 21. Enikuomehin OA. Cercospora leaf spot disease management in sesame (*Sesamum indicum* L.) with plant extracts. *Journal of Tropical Agriculture*. 2005;43: 19-23.
 22. Mahady GB, Pendland SL, Stoia A, Hamill FA, Fabricant D, Dietz BM, Chadwick LR. *In vitro* susceptibility of *Helicobacter pylori* to botanical extracts used traditionally for the treatment of gastrointestinal disorders. *Phytoterapy Research*. 2005;19:988-991.
 23. Wokocha RC, Okereke VC. Fungitoxic activity of extracts of some medicinal plants on *Sclerotium rolfsii*, causal organism of the basal stem rot diseases of tomato. *Nigeria Journal of Plant Protection*. 2005;22:106-110.
 24. Jabeen R. Evaluation of botanicals against *Xanthomonas oryzae* pv. *oryzae* using bacterial leaf blight disease of rice and characterization of bioactive compounds. MSc. Dissertation, Quaid-i-Azam University, Islamabad; 2006.
 25. Chen IN, Chang CC, Wang CY, Shyu YT, Chang TL. Antioxidant and antimicrobial activity of *Zingiberaceae* plants in Taiwan. *Plants Foods Human Nutrition*. 2008;63: 15-20.
 26. Laliitha V, Raveesha KA, Kiran B. Antimicrobial activity of *Solanum torvum* Swart. against Important seed borne pathogens of paddy. *Iranica Journal of Energy & Environment*. 2010;1:160-164.
 27. Das K, Tiwari RK, Shrivastava DK. Techniques for evaluation of medicinal plant products as antimicrobial agent: Current methods and future trends. *Journal of Medicinal Plants Research*. 2010;4:104-111.
 28. Khan ZS, Nasreen S. Phytochemical analysis, antifungal activity and mode of action of methanol extracts from plants against pathogens. *Journal of Agricultural Technology*. 2010;6:793-805.
 29. Sukanya SL, Yamini D, Fathima SK. Eco-friendly management of *Pyricularia oryzae*, the causal agent of blast of paddy. *Journal of Current Botany*. 2011;2:46-49.
 30. Gurjar MS, Ali S, Akhtar M, Singh KS. Efficacy of plant extracts in plant disease

- management. Journal of Agricultural Sciences. 2012;3:425-433.
31. Watanabe T. Pictorial atlas of soil and seed fungi: Morphologies of cultured fungi and key to species. 2nd ed. CRC Press Boca Raton; 2002.
 32. Sharma R, Sharma G, Sharma M. Additive and inhibitory effect of antifungal activity of *Curcuma longa* (Turmeric) and *Zingiber officinale* (Ginger) essential oils against *Pityriasis versicolor* infections. Journal of Medicinal Plants Research. 2011;5(32): 6987-6990.
 33. Suleiman MN, Emua SA. Efficacy of four plant extracts in the control of root rot disease of cowpea (*Vigna unguiculata* [L.] Walp). African Journal of Biotechnology. 2009;8(16):3806-3808.
 34. Sawsan A, Salwa MA, Sahar FD. Promising antifungal effect of some Folkloric medicinal plants collected from el-hamman habitat, Egypt against dangerous pathogenic and toxinogenic fungi. Journal of Agricultural and Biological Science. 2011;6(9):25-32.
 35. Sobowale AA, Oludare AA, Amusa NA, Oguntade O. Mycoparasitic capability of *Trichoderma asperellum* and its metabolite. Nigerian J. Mycology. 2015;7: 125-140.
 36. Salami AO, Popoola OO. Thermal control of Irish pathogen *Solanum tuberosum*. Journal of Agricultural Science. 2007; 52(1):17-31.
 37. Durrel LW. Hyphal invasion by *Trichoderma viride*. Mycopathologia. 1968; 35:138-144.
 38. Benitez T, Rincon AM, Limon MC, Codon AC. Biocontrol mechanism of *Trichoderma strains*. International Journal of Microbiology. 2004;7:249-260.
 39. Monte E, Llobell A. Proceedings world avocado congress (Actas V Congreso Mundial Del Aguacate). 2003;725-733.
 40. Elad Y, Chet I, Katan J. *Trichoderma harzianum*: A biocontrol agent effective against *Sclerotium rolfsii* and *Rhizoctonia solani*. The American Phytopathological Society. 1979;70(2):119-121.
 41. Okigbo RN, Nmeke IA. Control of yam tuber rot with leaf extracts of *Xylopi aethiopica* and *Zingiber officinale*. African Journal of Biotechnology. 2005;4(8):804-807.
 42. Akinpelu DA. Antimicrobial activity of *Vernonia amygdalina* leaves. Fitoterapia Journal Study Medicinal Plants. 1999;70: 432-435.
 43. Suleiman MN, Falaiye TN. *In vitro* control on fungus associated with bio-deterioration of sweet potato (*Ipomoea batatas* (L.) Lam) Tubers Futa. Journal of Research in Sciences. 2013;9(1):1-7.
 44. Onuh MO, Nath CO, Ebenezer OE. Efficacy of *Jatropha curcas* leaf extract in the control of Brown blotch disease of cowpea. Nigeria Journal of Plant Protection. 2005;22:46-52.

© 2019 Sobowale et al.; This is an Open Access article distributed under the terms of the Creative Commons Attribution License (<http://creativecommons.org/licenses/by/4.0>), which permits unrestricted use, distribution, and reproduction in any medium, provided the original work is properly cited.

Peer-review history:

The peer review history for this paper can be accessed here:
<http://www.sdiarticle3.com/review-history/48986>